



Satellite Tracking

An AirVantage Managed Service for Asset Tracking

Key Benefits

- Increased asset efficiency
- Improved business intelligence
- Ability to locate and track high value assets
- Loss mitigation, asset recovery enhancement
- Maintenance alerts

Key Features

- Cross browser availability
- Granular role and user level permissions
- Multiple icon share and color options
- Intuitive tree style asset management
- Location breadcrumb history

INNOVATIVE ASSET TRACKING AND MANAGEMENT

Sierra Wireless manages and delivers satellite data through a managed service model which includes a mapping and management software application, tracking device, and satellite connectivity. Satellite Tracking is the only asset tracking and messaging software-based managed solution designed specifically for mission critical responder's operational needs, serving both headquarters and field requirements.

Satellite Tracking has a thin-client application, able to map and manage tens of thousands of devices in a useful and intuitive format. It requires no special software to install, and supports most widely used web browsers (Edge, Chrome, Firefox and Safari). Satellite Tracking is cross platform and compatible with all major operating systems (Windows, Unix, Mac).

Satellite Tracking has been successfully tested and evaluated to display up to 20,000+ units for individual clients, and does not require large downloads.

Use Cases



EMERGENCY RESPONSE

In an emergency, high-value assets need to be deployed quickly, and to the right place. Emergency management agencies run by state, local, and federal governments can benefit from a satellite asset tracking solution that is not dependent on cellular communications.

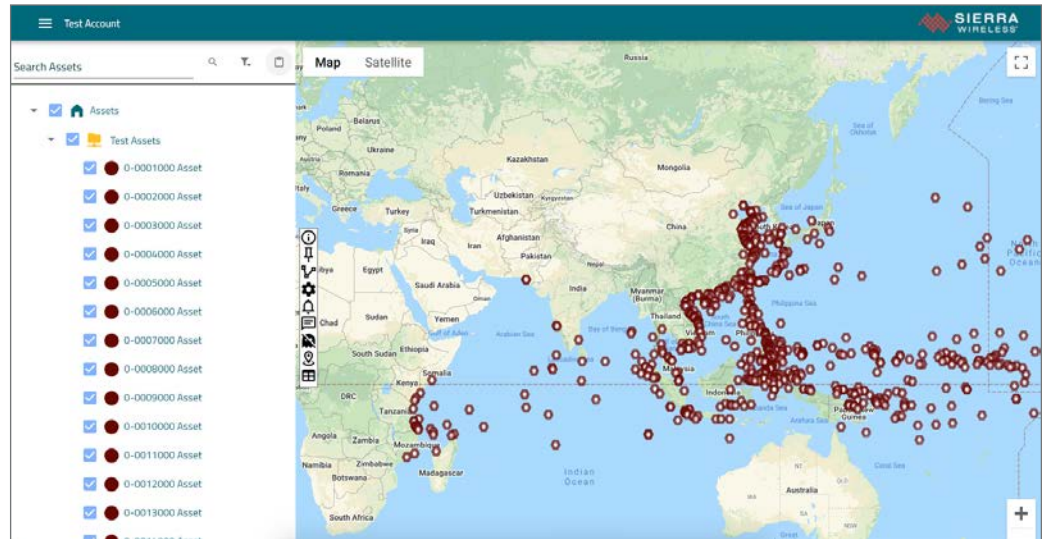


GLOBAL ASSET MANAGEMENT

Companies depend on the real-time data offered by Satellite Tracking for the management of assets that are deployed globally. Satellite tracking is critical for asset management in areas of challenged and/or non-existent cellular coverage.



The underlying Satellite Tracking system configuration is fully load balanced and redundant between two geographically diverse locations. Our prime and redundant server locations are Tier 1, five-nines hosting facilities. Data generated by transmissions and user interaction with Satellite Tracking is stored indefinitely.



COMPONENTS



DEVICE

The SmartOne devices, paired with a combination run time and line power cable, supports high volume messaging for mission critical and high value asset monitoring.



CONNECTIVITY

A comprehensive satellite network service enabled by 32 Low Earth Orbiting (LEO) satellites. The service provides low latency, reliable messaging that is supported in over 120 countries with global maritime applications.



APPLICATION

Built for real-time tracking, Satellite Tracking is a feature-rich, cloud-based tracking application that is satellite network capable and encompasses global satellite plans.

Contact Us To Learn More

With 25 years of wireless IoT expertise, Sierra Wireless helps ensure that your high value assets are safe and secure. For more information visit our [Satellite Tracking](#) info page or contact us directly at **1.877.687.7795** or insidesales@sierrawireless.com.

About Semtech

Semtech Corporation (Nasdaq: SMTC) is a high-performance semiconductor, IoT systems and cloud connectivity service provider dedicated to delivering high-quality technology solutions that enable a smarter, more connected and sustainable planet. Our global teams are committed to empowering solution architects and application developers to develop breakthrough products for the infrastructure, industrial and consumer markets.

To learn more about Semtech technology, visit us at [Semtech.com](https://www.semtech.com) or follow us on [LinkedIn](#) or [X](#).