

Power Your Charging Stations with AirLink® Routers



Reliable Connectivity is Key for Customer Satisfaction and Profitability

55% of the failed EV charging sessions are due to connectivity problems¹

82% of EV drivers would choose a charging center that delivers a better charging experience over another center²

1. Qmerit (2023) | 2. CACI (2023)

SEMTECH SOLUTIONS ENABLE RELIABLE CONNECTIVITY FOR EV CHARGERS



GAINING AN EDGE: BENEFITS OF SEMTECH AIRLINK® ROUTERS FOR CHARGE POINT OPERATORS



WIDE OPERATING TEMPERATURE RANGE
Ideal to deploy in indoor or protected outdoor locations



WI-FI HOTSPOT
Mutualize connectivity for several chargers, or for indoor parking installations



RECOVERY SCENARIOS
Strategies to auto-reconnect upon EV charger/ Network failure



FULL REMOTE MANAGEMENT
Through AirLink Management Service (ALMS) at the single charger level or at the fleet level



PURPOSE-BUILT REPORTING
Signal Strength, Signal quality... Generate alerts and actions upon abnormal events

A Solution for the Varied Needs of Charge Point Operators



AirLink® LX40
Ultra-compact 4G router with AirLink Complete

AIRLINK COMPLETE
REMOTE DEVICE & SECURITY MANAGEMENT with AirLink Management Service (ALMS)
OUT-OF-BAND MANAGEMENT (ALMS router only)
HARDWARE WARRANTY
TECHNICAL SUPPORT



AirLink® LX60
Dual-ethernet 4G router with AirLink Complete

AIRLINK COMPLETE
REMOTE DEVICE & SECURITY MANAGEMENT with AirLink Management Service (ALMS)
OUT-OF-BAND MANAGEMENT (ALMS router only)
HARDWARE WARRANTY
TECHNICAL SUPPORT

AirVantage® Smart Connectivity

THE POWER OF ONE



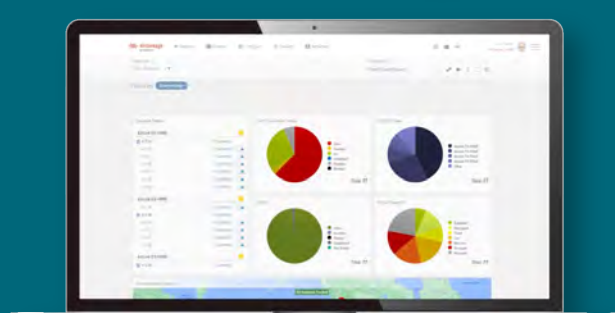
ONE
Global SIM



ONE
Management Platform



ONE
IoT Connectivity Partner



RESILIENT MULTI-OPERATOR GLOBAL COVERAGE

AirVantage Smart Connectivity provides global coverage with access to 600+ networks in more than 190 countries and territories, avoiding permanent roaming restrictions.

If the network goes down, our patented SIM algorithm works with the EV charger to automatically re-establish the data connection through another available network.

UNIFIED LIFECYCLE MANAGEMENT

You can combine AirLink routers with Smart Connectivity to get full control of the cellular link of the EV chargers within a unified platform: AirLink® Management Service.

Start Today

CONNECT WITH AN EV CHARGING EXPERT